

[Home](#) ■ [Prodotti](#) ■ [Grigliatura grossolana, fine e finissima](#) ■ [Griglia a gradini](#) ■ [HUBER Griglia Fine STEP SCREEN® SSF](#)

## HUBER Griglia Fine STEP SCREEN® SSF



### Efficiente rimozione ed elevazione del grigliato

- Elevata efficienza di separazione
- Semplice da inserire in canali esistenti, nessuna o minime modifiche richieste.
- Trasporto del grigliato a pavimento
- Spaziatura da 3 o 6 mm

### The variable installation angle ensures

- Optimal adjustment to individual hydraulic conditions, such as limited upstream levels due to preceding pumping stations
- Operating reliability due to tailor-made layout

The STEP SCREEN® System is widely accepted and successful due to its function and easy-to-follow operation principle as well as the simple cleaning method without any aids (self-cleaning effect according to the counter-current principle). It is furthermore easy to maintain and able to handle extremely big screenings volumes while it offers also a high operational reliability.

The motor linkage drive has been developed from the well-proven and patented link system. To the benefit of our customers we intentionally avoided difficult-to-maintain chain drives. With the new linkage type we are able to master the occurring bending moments on the lamellae, especially with high water levels.

## BENEFITS OF STEP SCREEN® SSF:

- **Functional principle:**
  - Lifting of screenings at bottom level due to a special bottom step design
  - Gentle and complete screenings transport due to the counter-current principle
- **Retrofitting / new plants:**
  - Optimally adjustable to individual hydraulic conditions due to the variable installation angle
- **Flow rate:**
  - High capacity; the flow passes the screen surface only once
- **Separation efficiency:**
  - High separation efficiency due to the narrow slot width and the produced screenings carpet
- **Cleaning:**
  - Self-cleaning effect due to moveable lamellae (no spray water, no brushes)
- **Operational stability:**
  - Reduced susceptibility to grit, gravel and stones due to the bottom step washing system
- **Pivoted screen:**
  - Without the need to remove the subsequent wash press or transport unit
- **Protection against corrosion:**
  - Manufactured from stainless steel and acidtreated in a pickling bath
- **Experience:**
  - Unrivalled for more than 20 years

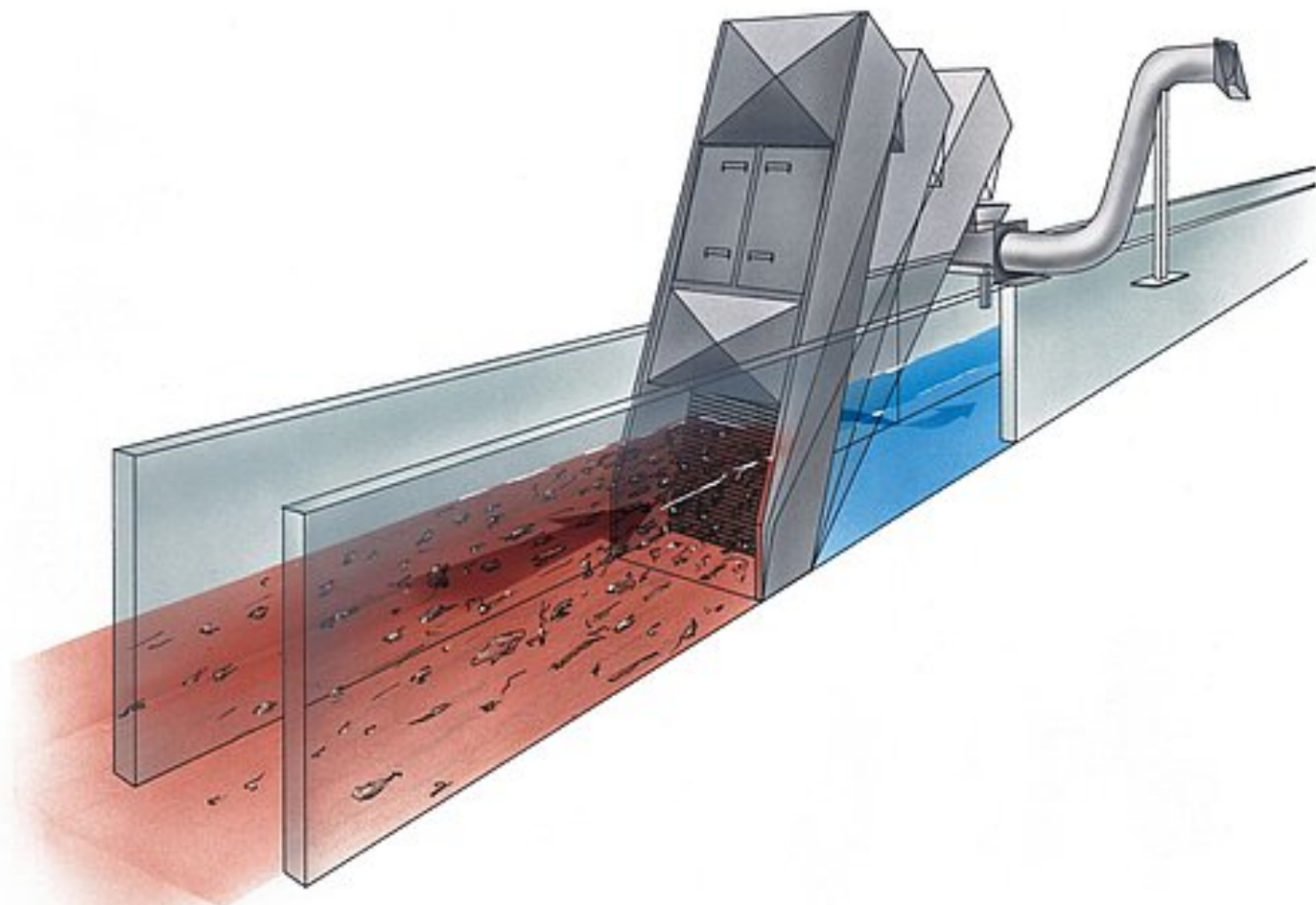
## Downloads

 [Depliant: STEP SCREEN® Flexible SSF \(inglese\)](#) [pdf, 398 KB]

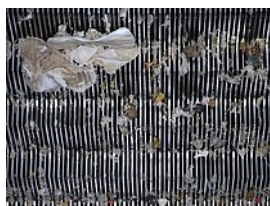
## Applicazioni

- [HUBER supplies the machines for the mechanical treatment stage of the worlds' largest wastewater treatment plant project](#)

## Principio di funzionamento



## Foto



## Altri prodotti della gamma: Griglia a gradini

- [HUBER Griglia Fine STEP SCREEN® SSV](#)

**HUBER Technology srl**  
P.IVA e C.F. 01689490215  
Cap. Soc. Euro 600.000,00 int. ver.  
Iscr. al Registro delle Imprese  
di Bolzano n. 01689490215

**Sede amministrativa:**  
Zona Produttiva Vurza, 22  
**39055 Pineta di Laives (BZ)**  
Tel. 0471.590107  
Fax 0471.594280

**Sede commerciale:**  
Via A. Meucci, 35  
**27055 Rivanazzano (PV)**  
Tel. 0383.934023  
Fax 0383.944453

**Internet:**  
[www.huber.de](http://www.huber.de)  
[www.hubertec.it](http://www.hubertec.it)  
[info@hubertec.it](mailto:info@hubertec.it)

