

[Home](#) ■ [Prodotti](#) ■ [Grigliatura grossolana, fine e finissima](#) ■ [Griglia a gradini](#) ■ [HUBER Griglia Fine STEP SCREEN® SSV](#)

## HUBER Griglia Fine STEP SCREEN® SSV



L'evoluzione dello STEP SCREEN®  
Per canali profondi ed altezze di scarico elevate

- Installazione salvaspazio con inclinazione a 75°
- Per grosse portate
- Asporto del grigliato a pavimento
- Spaziatura 3 o 6 mm

The STEP SCREEN® System is widely accepted and successful due to its function and easy-to-follow operation principle as well as the simple cleaning method without any aids (self-cleaning effect according to the counter-current principle).

It is furthermore easy to maintain and able to handle extremely big screenings volumes while it offers also a high operational reliability. The motor linkage drive has been developed from the well-proven and patented link system.

To the benefit of our customers we intentionally avoided difficult-to-maintain chain drives. With the linkage type we are able to master the occurring bending moments on the lamellas, especially with high water levels.

### Vantaggi

## THE BENEFITS OF THE VERTICAL STEP SCREEN® SSV AT A GLANCE:

### Function principle:

- Lifting of screenings at bottom level due to a special bottom step design
- Gentle and complete screenings transport due to the counter-current principle

### Retrofitting / new plants:

- Optimally adjustable to individual constructional conditions (high discharge height, deep channel) due to the steep installation angle

### Flow rate:

- High capacity; the flow passes the screen surface only once

### Separation efficiency:

- High separation efficiency due to the narrow slot width and the produced screenings carpet

### Cleaning:

- Self-cleaning effect due to movable lamellas (no spray water, no brushes)

### Operational stability:

- Reduced susceptibility to grit, gravel and stones due to the bottom step washing system

### Protection against corrosion:

- Manufactured from stainless steel and acidtreated in a pickling bath

### Experience:

- Unrivalled for more than 20 years

### Pivoting arrangement:

- Removal of the subsequent wash press or conveying unit is not required.

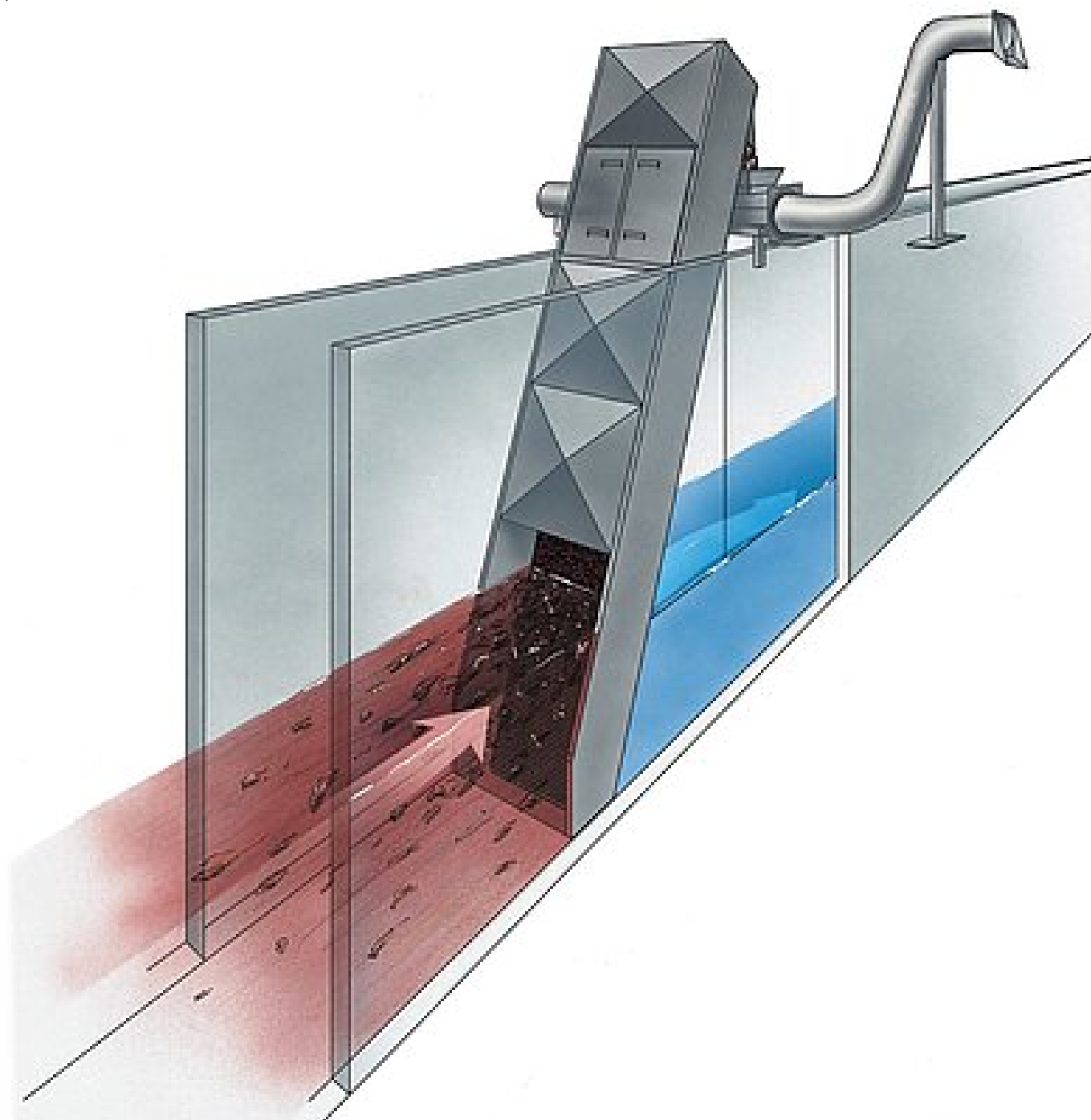
## Downloads

 [Depliant: STEP SCREEN® Vertical SSV \(inglese\)](#) [pdf, 388 KB]

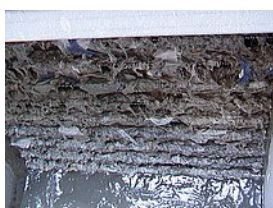
## Applicazioni

- [HUBER STEP SCREEN® Vertical for cooling water screening in South Africa](#)
- [HUBER supplies the machines for the mechanical treatment stage of the worlds' largest wastewater treatment plant project](#)
- [4 HUBER VORMAX Vortex Grit Chamber screens in Saudi Arabia](#)

## Principio di funzionamento



Foto



Altri prodotti della gamma: Griglia a gradini

**HUBER Technology srl**

P.IVA e C.F. 01689490215  
Cap. Soc. Euro 600.000,00 int. ver.  
Iscr. al Registro delle Imprese  
di Bolzano n. 01689490215

**Sede amministrativa:**

Zona Produttiva Vurza, 22  
**39055 Pineta di Laives (BZ)**  
Tel. 0471.590107  
Fax 0471.594280

**Sede commerciale:**

Via A. Meucci, 35  
**27055 Rivanazzano (PV)**  
Tel. 0383.934023  
Fax 0383.944453

**Internet:**

[www.huber.de](http://www.huber.de)  
[www.hubertec.it](http://www.hubertec.it)  
[info@hubertec.it](mailto:info@hubertec.it)

